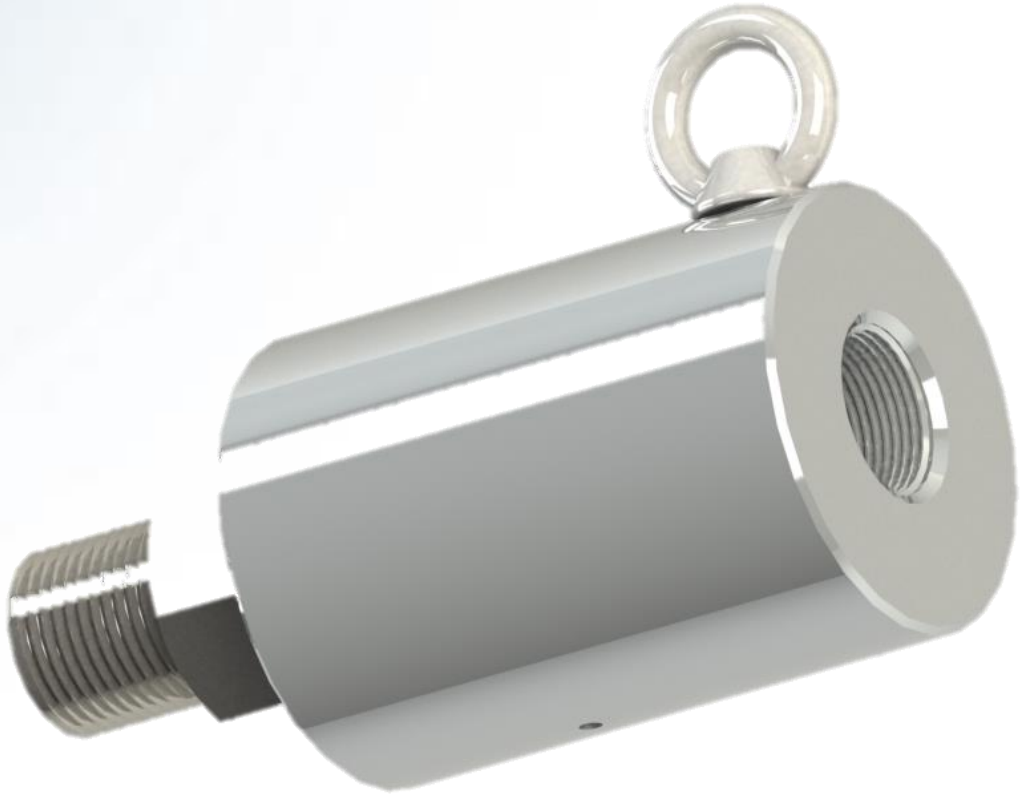


ENERTRON



www.enertron.in

Series 600

About ENERTRON

Page No Contents

2 About ENERTRON

3 What are Rotary Unions?

4 Series 600

5 Series 600 Dimensions

6 Quick Release Flange

Enertron Technologies Pvt Ltd, located in Ahmedabad, India is a vibrant, innovative and value driven company manufacturing rotary unions, swivel joints and hydraulic cylinders.

Developed in 2015, and continually improved as a result of practical requirements, ENERTRON rotating unions are at the cutting edge of technology today.

Our product range is regularly being developed and expanded. In addition to this, we offer customer specific solutions and modular designs which enables us to provide our customers with the perfect solution for virtually any application. A direct contact with customers and a close collaboration with the OEM's provide us the basis for constant improvement.

Note

Enertron Technologies Pvt Ltd has made every effort to ensure that the information contained in the publication is accurate and reliable. Determining the suitability of our products for specific applications is the user's responsibility.

What are rotary unions?

A rotary union transfers media (water, steam, air, oil, hydraulic fluid, etc.) under pressure or vacuum from a stationary inlet to a rotating outlet; preserving and isolating the media connection.

How do I choose the rotary union for my application?

Tell us about your application. We need to know:

1. Type of media to be transferred
2. Number of media passages
3. Shaft and housing connection (Thread size and type or Flange size)
4. Operating Pressure
5. Operating Temperature
6. Operating Speed
7. Torque and load requirements
8. Flow channel (passage) size



Cross section view

Series 600



Operating Parameters

Media: Water, Oil

Pressure : upto 10 bar (145 psi)

Temperature : -18°C to 105° C (Applications above 105°C require different seal materials. Consult with ENERTRON if required)

Speed: upto 2500 rpm

Threads:

- 1/8 BSP to 2 BSP
- Higher BSP models also available
- NPT models also available
- Flanged models also available

Material :

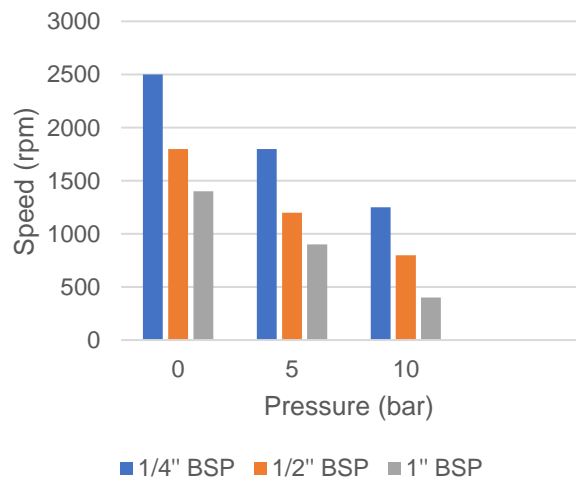
- SS 304 Housing
- Carbon steel with Electroless nickel plating housing available on request
- SS 304 Shaft with hard chrome
- Carbon steel with Electroless nickel plating hardened shaft available on request

Customization available

Features & Benefits

- Superior quality dynamic sealing
- Corrosion resistant housing
- Hardened Shaft
- Dual ball bearings
- Long Service Life
- Custom Modifications available

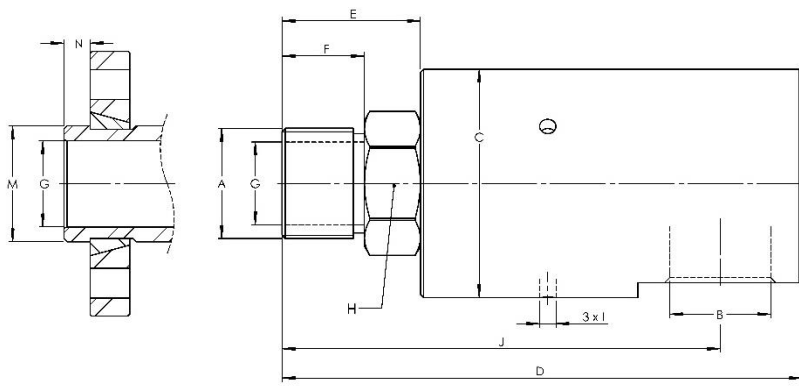
Speed- Pressure chart relation in accordance with size



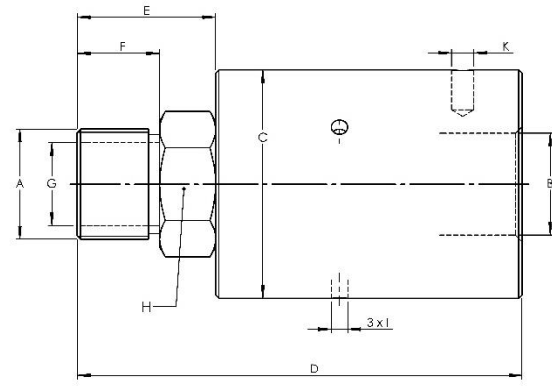
* Chart Data gives just an idea and the values here are to be considered as approximate

600 Series - Dimensions

Series 600 - Parallel
Series 610 - Perpendicular



Perpendicular

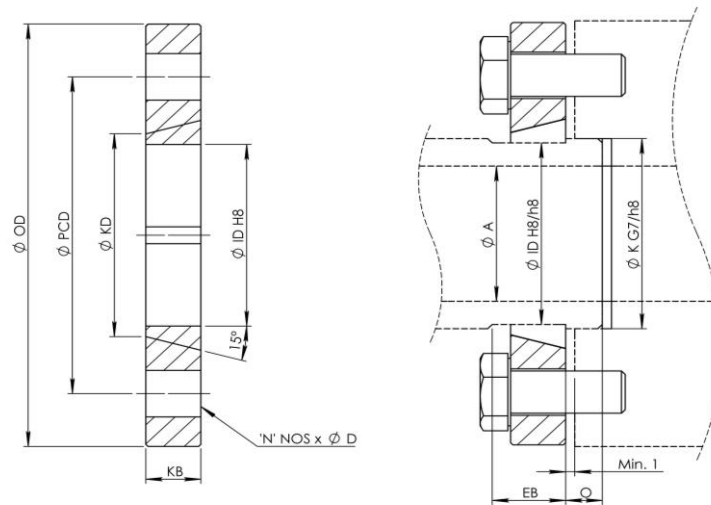


Parallel

* For size higher than 1-1/4" bsp in perpendicular series, elbow will be given acc to customer requirements

DN	MONO-FLOW PART NO	A Rotor Connection	B BSP	ØC	D	E	F	Ø G	H	Ø I	J	K	M	N
6	600-11	1/8" BSP	1/8" BSP	34	79	20	12	4	14	3.3	-	M5	-	-
	610-11				85						75	-	-	-
8	600-22	1/4" BSP	1/4" BSP	34	85	23	15	6.5	16	3.3	-	M5	-	-
	610-22				91						80	-	-	-
10	600-33	3/8" BSP	3/8" BSP	49	104	28	18	9.5	22	4.2	-	M6	18	6
	610-33				114						99	-	18	6
15	600-44	1/2" BSP	1/2" BSP	49	108	30	20	12.7	22	4.2	-	M6	24	6
	610-44				121						104	-	24	6
20	600-55	3/4" BSP	3/4" BSP	64	124	37	22	17.5	32	5	-	M8	30	8
	610-55				142						121	-	30	8
25	600-66	1" BSP	1" BSP	69	135	42	25	25	38	5	-	M8	35	8
	610-66				158						133	-	35	8
32	600-77	1-1/4" BSP	1-1/4" BSP	89	162	53	28	32	41	6.8	-	M8	45	8
	610-77				194						163	-	45	8
40	600-88	1-1/2" BSP	1-1/2" BSP	89	179	57	30	38	46	6.8	-	M8	50	10
50	600-99	2" BSP	2" BSP	108	194	62	32	48	55	8.5	-	M8	65	10

Quick Release Flange



DN SIZE	K FLANGE	INNER RING	ØA	Ø O.D.	Ø P.C.D	N NOS x ØD	Ø KD	Ø ID H8/h8	KB	Ø K G7/h8	O	EB
10	EMKF-10	EMIR-10	10	55	40	4 x 7	20	17	10	18	6	11
15	EMKF-15	EMIR-15	13	70	50	4 x 9	26	22	10	24	6	11
20	EMKF-20	EMIR-20	20	75	55	4 x 9	32	28	12	30	8	13
25	EMKF-25	EMIR-25	25	80	60	4 x 9	37	33	12	35	8	13
32	EMKF-32	EMIR-32	32	100	75	4 x 11	48	43	12	45	8	13
40	EMKF-40	EMIR-40	38	105	80	4 x 11	53	48	15	50	10	16
50	EMKF-50	EMIR-50	50	130	100	4 x 14	69	63	15	65	10	16
65	EMKF-65	EMIR-65	66	150	120	4 x 14	89	82	15	85	10	16
80	EMKF-80	EMIR-80	81	180	145	4 x 18	109	102	18	105	12	20
100	EMKF-100	EMIR-100	98	195	160	6 x 18	120	110	20	114	12	22
125	EMKF-125	EMKF-125	120	225	190	6 x 18	147	137	22	142	20	25
150	EMKF-150	EMIR-150	145	255	220	8 x 18	178	165	25	170	25	28
200	EMKF-200	EMIR-200	195	310	275	8 x 18	232	220	28	225	30	32
250	EMKF-250	EMIR-250	240	390	350	8 x 23	290	273	37	280	35	40
300	EMKF-30	EMIR-30	295	470	410	16 x 23	350	332	42	340	40	45